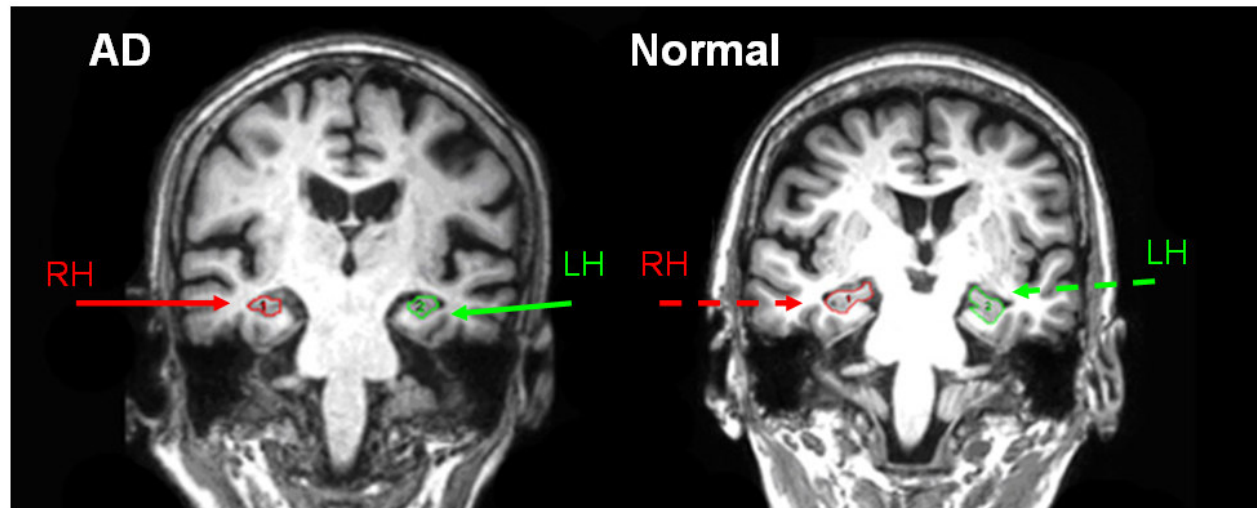


MRI: Volume of Hippocampus

AD versus normal

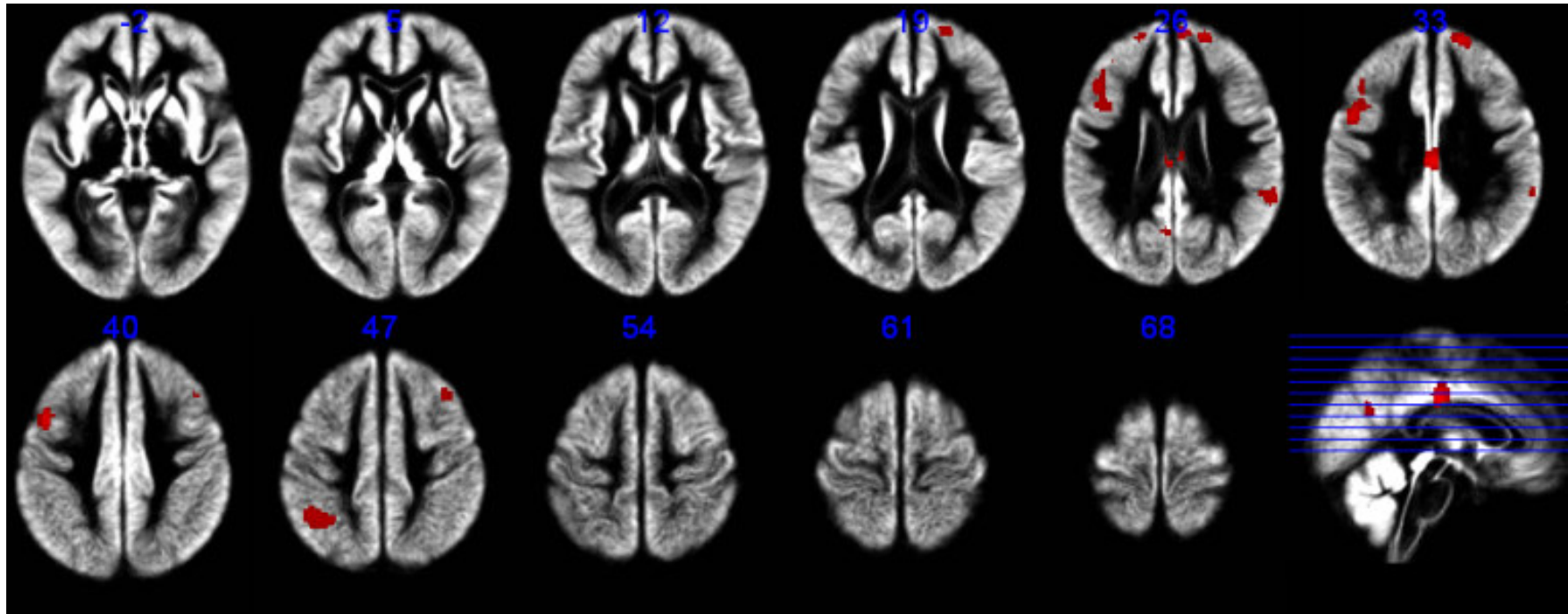
- Manual hippocampal volumetry vs. Hippocampal-ROI voxel-based morphometry (with standard or DARTEL registration) showed significant differences between AD and normal controls



AD='Alzheimer's disease'
RH='Right Hippocampus'
LH='Left Hippocampus'

- Accuracy in prediction of Alzheimer's disease was approx. 85% and 87% in using manual right & left hippocampal volumes (DARTEL similar as manual)
- **PI: Dr. Henry Mak** (unpublished)

MRI (by ASL) : Regional cerebral blood flow



Findings:-

There are significant decreases in CBF in AD as compared to cognitively normal elderly controls (after adjustment for gray matter volumes) in the following regions (highlighted as red colour in figure) i.e. middle & posterior cingulate, bilateral inferior frontal, bilateral superior frontal, right inferior parietal and left superior temporal gyri. (**PI: Dr. Henry Mak**, unpublished)